

Very Wideband RF Choke

50 to 10000 MHz

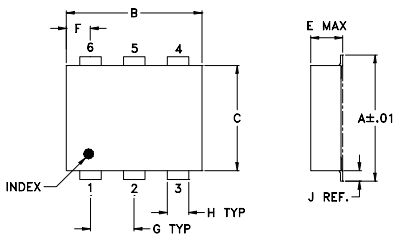
Maximum Ratings

| | |
|-----------------------|----------------|
| Operating Temperature | -40°C to 85°C |
| Storage Temperature | -55°C to 100°C |
| DC Current | 250 mA |

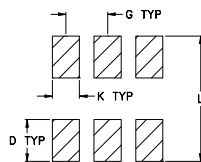
Pin Connections

| | |
|------------|---------|
| RF-IN & DC | 6 |
| DC | 3 |
| NOT USED | 1,2,4,5 |

Outline Drawing



PCB Land Pattern

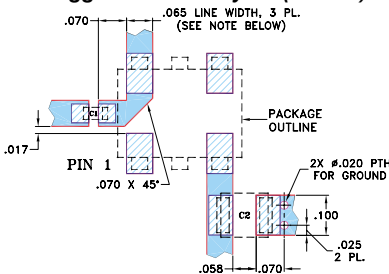


Suggested Layout,
Tolerance to be within ±.002

Outline Dimensions (inch)

| A | B | C | D | E | F | G |
|------|------|------|------|-------|------|------|
| .272 | .310 | .220 | .100 | .112 | .055 | .100 |
| 6.91 | 7.87 | 5.59 | 2.54 | 2.84 | 1.40 | 2.54 |
| H | J | K | L | wt | | |
| .030 | .026 | .065 | .300 | grams | | |
| 0.76 | 0.66 | 1.65 | 7.62 | 0.20 | | |

Demo Board MCL P/N: TB-113 Suggested PCB Layout (PL-026)



CAPACITORS: C1: 6800 pF, 0603 SIZE; C2: 1.0 uF, 1311 SIZE.

NOTES: 1. TRACE WIDTH IS SHOWN FOR ROGERS RO4350B WITH DIELECTRIC THICKNESS .030" ± .002"; COPPER: 1/2 OZ. EACH SIDE. FOR OTHER MATERIALS TRACE WIDTH MAY NEED TO BE MODIFIED.
2. BOTTOM SIDE OF THE PCB IS CONTINUOUS GROUND PLANE.

- DENOTES PCB COPPER LAYOUT WITH SMOBC (SOLDER MASK OVER BARE COPPER)
- DENOTES COPPER LAND PATTERN FREE OF SOLDER MASK

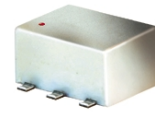
Features

- low parasitic capacitance 0.1 pf typ.
- effective parallel resistance, Rch 800 ohm typ.
- protected by US Patent, 6,133,525

Applications

- biasing amplifiers
- biasing of laser diodes
- biasing of active antennas

ADCH-80A+
ADCH-80A



CASE STYLE: CD542

PRICE: \$2.75 ea. QTY (10-49)

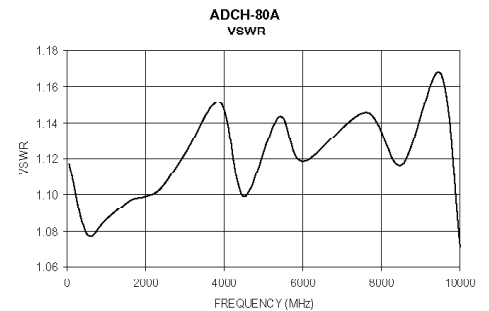
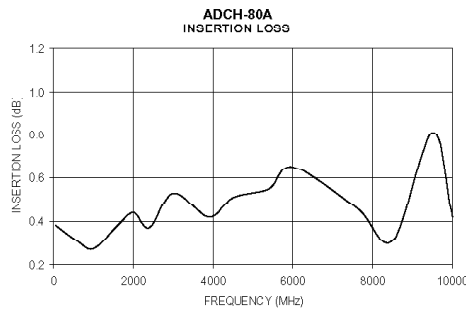
**+ RoHS compliant in accordance
with EU Directive (2002/95/EC)**

The +Suffix identifies RoHS Compliance. See our web site for RoHS Compliance methodologies and qualifications.

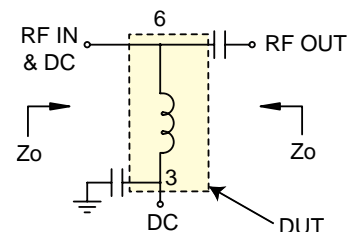
Electrical Specifications

| MODEL NO. | FREQUENCY (MHz) | INSERTION LOSS* (dB) | | VSWR* (:1) | | DC CURRENT (mA) Max. | INDUCTANCE (μH) Typ. | | |
|-------------|-----------------|----------------------|------|------------|------|----------------------|----------------------|---------|----------|
| | | Typ. | Max. | Typ. | Max. | | @ 0 mA | @ 50 mA | @ 100 mA |
| ADCH-80A(+) | 50-8000 | 0.3 | 1.0 | 1.1 | 1.35 | 100 | 7.0 | 1.8 | 1.0 |
| | 50-10000 | 0.3 | 2.0 | 1.1 | 1.6 | 100 | 7.0 | 1.8 | 1.0 |

*tested with circuit shown below, Zo=50 ohms



TEST CIRCUIT*



Mini-Circuits®

Distribution Centers NORTH AMERICA 800-654-7949 • 417-335-5935 • Fax 417-335-5945 • EUROPE 44-1252-832600 • Fax 44-1252-837010

Mini-Circuits ISO 9001 & ISO 14001 Certified

INTERNET <http://www.minicircuits.com>



REV. C
M98898
ADCH-80A
ED-8059
DJ/TD/CP
060629